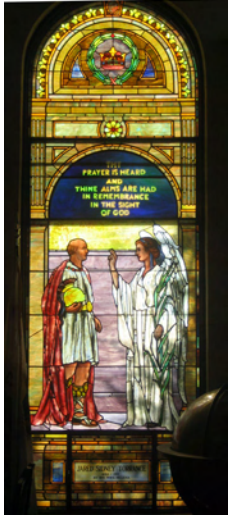


"Touched by splendor - embraced by beauty."

A HIDDEN TREASURE OF STAINED GLASS IN SOUTHERN CALIFORNIA BARLOW RESPIRATORY HOSPITAL LIBRARY



Barlow Respiratory Hospital Library
Jared Sidney
Torrance Window
Los Angeles, CA, 2007



Barlow Respiratory Hospital Library
James Slauson Window
Los Angeles, CA, 2007

Both windows are dated 1922.

The Slauson window was structurally sound, but had suffered noticeable impact cracks to the face and one arm and BB holes in a foot and a piece of the wall. This is a work of intrinsic artistic value and the best course was to carefully clean the affected areas and then to use a technique called cold painting. The visibility of the damaged areas was greatly minimized and the original art work was preserved.

The Torrance window had a secondary layer of stained glass added on the outside during a misguided restoration project, probably in the 1970s. This work was completely falling apart and was carefully removed, revealing the original beauty of the window. Damaged inscriptions at the top and bottom of the window were also restored.

WEBSITE ENHANCED

Please visit us at www.AncientArtsStainedGlass.com

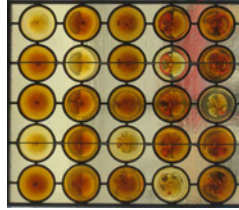
A new FAQ department provides extensive information to those interested in the process of stained glass, the different types of stained glass and the repair and restoration of stained glass.

The website has many pictures and newsletter photos are in full color.

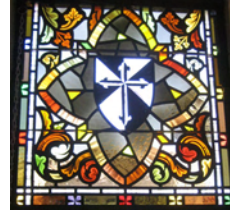
Among other features, you can see examples of our work in the residential, commercial, church and cemetery areas; read letters of reference; and read past issues of the "Cutting Edge Quarterly."

CHURCH STAINED GLASS PROVIDES ARTISTIC CHALLENGES

ANCIENT ARTS STUDIO PERFORMS MANY CHURCH WINDOW REPAIRS AND RESTORATIONS



Visitation Catholic Church
Entry Door Panels
Westchester, CA, 2007



Our Lady of Mt. Carmel Catholic Church
Transom Panel of Meister Eckart Window
Newport Beach, CA, 2007



St. Joseph Catholic Church
Window of St. Patrick Baptizing a Chieftain
Pomona, CA, 2007

Two panels of amber rondels in the church entry doors had been installed without any reinforcement bars in the 1940s. Over the decades the panels severely buckled and many of the background pieces had cracked. Ancient Arts recreated these two panels with new background glass, complete re-leading and proper reinforcement bars.

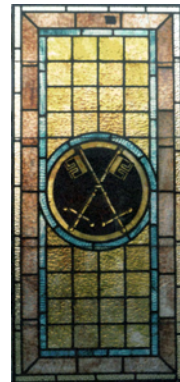
This is one of three operable panels that had evidenced sufficient buckling to require re-leading. Older stained glass windows, even when properly reinforced tend to buckle over time. The lead is strong, but subject to stress from gravity and wind load.

An incident of senseless vandalism necessitated the restoration of this beautiful panel. No photographs of the window were found. Therefore, research and artistic imagination were necessary to determine the content of the window, which was missing a head, face, hands and part of a garment.



St. Catherine Laboure Window in Former Cry Room
Torrance, CA, 2008

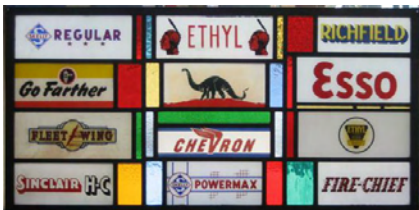
This is one of five windows with very noticeable damage caused by vandalism and accidents. The most important part of this repair was a patient and persistent effort to find matching and compatible glass.



St. John Vianney Chapel
Sanctuary Door
Balboa Island, CA, 2005

Two of these beautiful old sanctuary door panels were starting to sag and lose their rigidity. Many pieces of glass were cracked, but after extensive research of several distributors and manufacturers, no good matches were found. Therefore, the cracked pieces were carefully edge glued with silicone and the panels were completely re-leaded.

RESIDENTIAL STAINED GLASS IS THE EPITOME OF SELF EXPRESSION EACH CLIENT HAS THE OPPORTUNITY TO COLLABORATE ON THEIR SELECTION OF STYLE, DESIGN, TYPE OF GLASS, AND COLOR SELECTION



Painted Glass Advertising Signs
Incorporated into Stained Glass Window
Private Residence
Manhattan Beach, CA, 2007



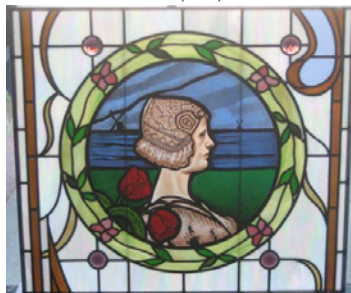
Leaded and Beveled Glass Cabinet Doors
Private Residence
San Pedro, CA, 2007



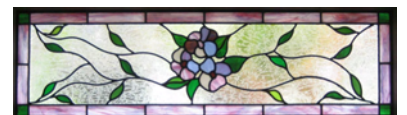
Butterfly Window
Private Residence
San Pedro, CA 2007



Leaded and Beveled Glass Window
Private Residence
Los Angeles, CA, 2007



Skylight with Painted, Stained Glass
Private Residence, Signal Hill, CA
Created, 1993, Restored After Severe Accidental Damage, 2007



Living Room Window
Private Residence
San Pedro, CA, 2007